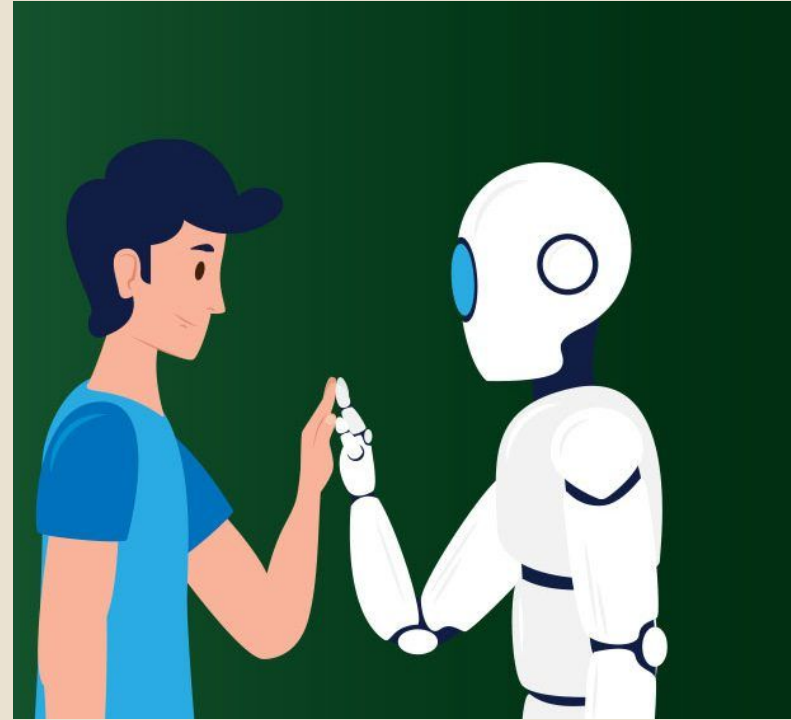


Using Technology and Artificial Intelligence (AI) to Improve School Psychologist Efficiency

Charlene Mangi

Fatimah Muhammad

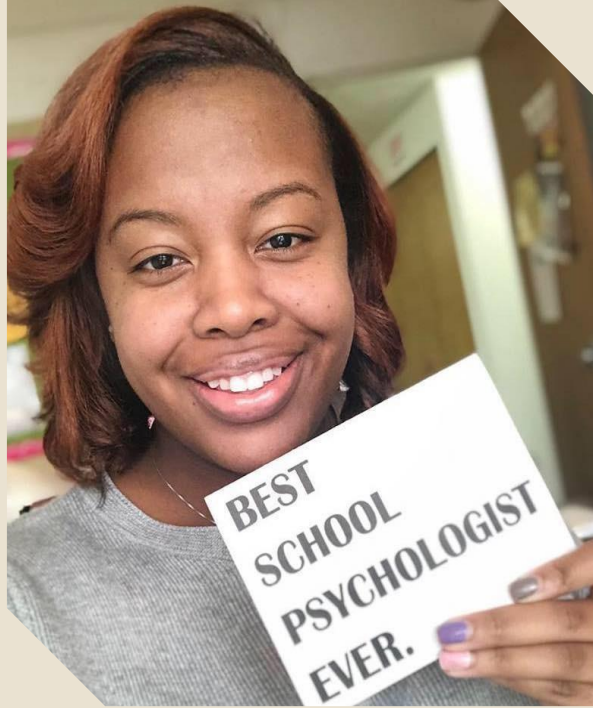
2023 Fall MASP Conference






Charlene Mangi, M.Ed, Ed.S
(She/her)

School Psychologist
Ann Arbor Public Schools




Fatimah Muhammad, M.A, Psy.S.
(She/Her)

School Psychologist
West Bloomfield School District



Who Is In The Room



Learning Objectives

- Identify ways that a variety of technology tools, including AI can be used to automate daily tasks of a school psychologist
- Use data insights to inform decision-making in school psychology
- Connect with other professionals using technology and AI
- Discuss some of the ethical implications of new technology tools, and how these advances can ethically be used to improve service provision



Agenda

- 1) Getting ready to embrace new technology
- 2) G-suite and outlook enhancements
- 3) Form Publisher
- 4) AI: ChatGPT and SchoolPsych AI



Norms For Today

Open Communication

This is a safe space. Please openly communicate your thoughts, questions, and concerns. There is no such thing as a bad question.

Patience and Tolerance

Learning new technology can be challenging, and individuals within the group may have different learning paces and backgrounds. Establish patience and tolerance, so that everyone support and assist each other without judgment.

Collaboration and Knowledge Sharing

We would like everyone here today to collaborate with one another and share knowledge to help others. We only have a short time together. Share your knowledge with your neighbors to help accelerate the learning process.

Goal Setting and Accountability

Set goals and expectations for your learning process. Make a list of what you will take with you, and how you will continue your learning later.



What do you need in order to start using these new technologies?



- To know what is possible
- To know what terms to Google!
- Patience
- A willingness to invest some time in setting up a new tool, or learning how to use it



Email Templates

Using email templates for parent input forms, teacher input forms.... Anything you regularly send!



Raise your hand if you
have experience with this
tool



That was cool but...

Take your time with step by step instructions here:

[For Gmail](#)

[For Outlook](#)

Expected time to set up/become proficient: 2-4 minutes

Expected time saved: 2-3 minutes every day



Schedule Send

Setting time that emails are sent, including automated reminders.



Raise your hand if you
have experience with this
tool



New Message



Recipients

Subject

 Schedule send




Send



New Message



To  Charlene Mangi X

Cc Bcc

Subject

Schedule send X

Eastern Daylight Time

Tomorrow morning Oct 17, 8:00AM

Tomorrow afternoon Oct 17, 1:00 PM

Monday morning Oct 23, 8:00 AM

 Pick date & time

  Sans Serif              

Send



That was cool but...

Take your time with step by step instructions here:

[For Gmail](#)

[For Outlook](#)

Expected time to set up/become proficient: 2-3
minute

Expected time saved: 2-3 minutes every day (Plus
freeing up your executive functions from having to
remember to send emails!)

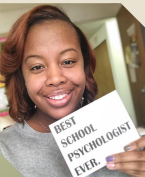


Google Form

Creating ways to get efficient responses



Raise your hand if you
have experience with this
tool



Student Interview



That was cool but...

Take your time with step by step instructions here:

Written Instructions

Expected time to set up/become proficient: 5-10 minutes

Expected time saved: 30-45 minutes/evaluation



Form Publisher

Form Publisher is a Google Forms add-on that turns submissions into Google Docs, Sheets, or PDFs and is useful for sending feedback to users easily, or creating nicely written reports, ready to be copy and pasted into a MET or used as your MET template.



Raise your hand if you
have experience with this
tool



That was cool but...whoa!

Take your time with step by step instructions here:

[Written Instructions](#)

Expected time to set up/become proficient: 20-60 minutes (depending on comfort with google forms,)
Expected time saved: potentially hours per evaluation, depending on how you use it



5 Minute Scavenger Hunt

Choose one or more:

- Create an email template
- Schedule send an email to a peer or colleague
- Create a new Google Form and add two types of questions
- Download an extension for save to doc or form publisher



Why To Use Artificial Intelligence

Think about task you complete on a daily basis that are redundant; the ones you think about did I really need loads of student debt in order to complete this task.

Ask yourself, would work life be better if I did not have to do these tasks?

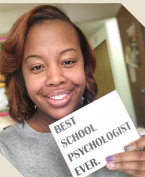
Ask yourself, would I be able to be a changemaker if only I had more time?



Why To Use Artificial Intelligence

Meet your administrative assistants:

- Chat
- Sophia
- Raina

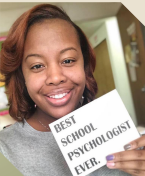


AI Writing Tools

ChatGPT & School Psych AI



Raise your hand if you
have experience with this
tool



ChatGPT – chat.openai.com

Observation

write an observation of a student in a classroom only using the following information:

Student Interview

Only using the following information, write Student's responses by category in paragraph format and not in first person

Teacher Input

Using only the information provided, summarize in paragraph format this teacher's input about Student's performance in their class

Explore

What are good other prompts



School Psych AI
schoolpsych.ai

**SCHOOL
PSYCH AI**

***DEDICATE MORE TIME
TO STUDENTS AND
LESS TO PAPERWORK***



DEMO

SCHOOL PSYCH REPORT INTERPRETER

with Sophia, Your School Psych
Personal Assistant



Schoolpsych.ai

Observation

Turn my notes below into a narrative of my observation of Student in the classroom of Ms. Teacher.

Organize my observation narrative in the following categories: Communication, Social Reciprocal interactions and Restricted repetitive behaviors, in the context of Autism Spectrum Disorder eligibility

Create

Write a permission form for 5th grade students to participate in a social skills group using the Learning to Breathe mindfulness curriculum.

Rewrite to make it clear this program is secular and not-religious

Assessment results

Using this table of WISC assessment scores [copy paste table from Q interactive report], describe this student's cognitive strengths and weaknesses. Include percentile ranks and standard scores and describe overall indices and the subtests under each index.

Rewrite

Rewrite this description of a students cognitive strengths and weaknesses with a more neurodiverse-affirming tone

Rewrite this summary of Student's testing results to be at an 8th grade reading level





Raina

Magic School





For Special Educators

- **IEP Suggestion Generator**

Generate suggestions for students who have an individualized education program (IEP).

- **Accommodation Suggestion Generator**

Generate a list of 5-10 accommodations for a student who needs support, has a 504 plan, IEP, or BIP.

- **Text Leveler Tool**

Adapt any text for any grade level to fit a student's reading level / skills.

- **Text Scaffolder Tool**

Support reader who are behind grade level or need extra support by defining tier 2 & 3 vocabulary and generating questions for any text



Take 5 minutes to do an AI scavenger hunt

Choose one or more:

Make an account in (choose one)

- Schoolpsych.ai
- Chatgpt
- MagicSchool.ai

Ask the AI to

- Describe an assessment tool you typically use for a report template
- Draft an email encouraging a parent to complete input forms
- Write a permission form for a student to attend a Tier 2 social skill group
- Write a One-Pager branding yourself
- Tell you a good school psych joke, or write a school psych song

Provide feedback to the AI to tweak and improve their response



Other Tools:

Bard

Similar to ChatGPT but shorter more concise responses

Gamma

Auto generated presentation slides

ChatGPT & AI for School Psychologist

Facebook group



Ethical Considerations

- At the end of the day, your reports are YOURs. Check anything generated by AI (or any technology!) for errors, biases etc.
- Anything you put into AI is going on the Internet. Maintain confidentiality by avoiding using identifying information (student name, DOB, school, teacher name etc.) Use Ctl+F to search and replace generate terms like “Student” and “Teacher” in final document
- Credit- Whether you want to indicate that AI tools assisted in preparing a report is your choice, but it's worth considering in what way you are using the tool and what other kinds of tools/resources you use and whether you credit them (for example: Q-Interactive, Grammerly, Spellcheck etc). Additionally, it's worth considering why we might credit something- Generally our reports don't result in any personal gain for ourselves, and a parent cannot follow up with schoolpsychai to ask further questions about its information



Embrace Technology

Dedicate more time to students and less time with paperwork

Consider starting with the tasks that are repetitive and tedious, such as descriptions of subtests or organizing random notes into paragraphs that can be more easily edited.

